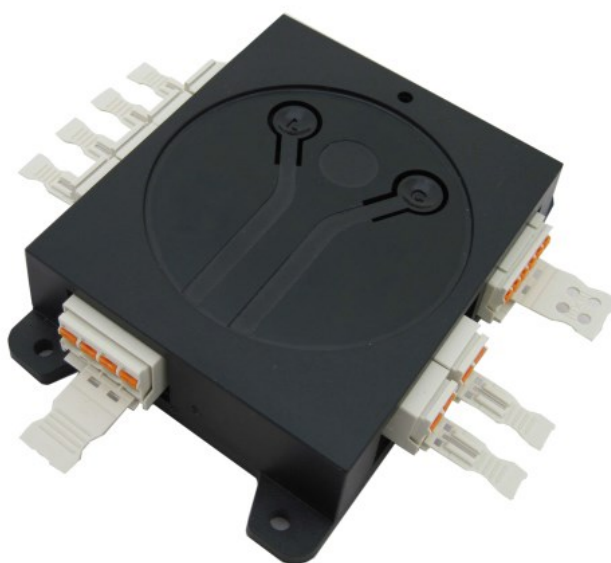




SFSP RANGE

Sans Fil Sans Pile

- Install quickly your low voltage lightings (no passage of cables nor heavy losses in walls)
- Implant and move your switches where you wish.
- SFSP modules possess 6 dimmable outputs
- 128 memory switches per module



Solutions connectées intelligentes.



SCHEIBER

www.scheiber.com

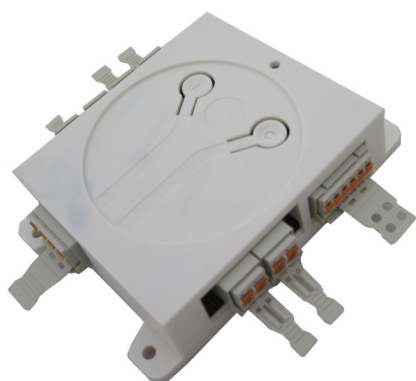
Description

The wireless and batteryless modules (main and auxiliary) have been created as to be easily integrated into a false ceiling or a technical gallery. Several main modules can be used on the same network to increase the reach.

Both modules have similar features. The main module integrates a receiver in 868 MHz (or 315 MHz).

Characteristics

Reference :	41.72101 .01 001001	41.72106.01 001001
Frequency :	868Mhz	
Protected and adjustable output current :	From 0.5 to 5A	
Power voltage :	10 to 34VDC	
Maximum current per output :	5A	
Lead wire and outputs section :	0.2 to 2.5mm ²	
Input wire and coding section :	0.2 to 1.5mm ²	
Power connector and input/output :	Removable cage clamp	
Integrated receiver:	YES	NO
Divers :	315 Mhz version available reference 41.72101.11 001001	-
Dimensions l x l x h (mm) :	110 x 78 x 26	
Weight (kg) :	0.190	



Main module **41.72101.01 001001**



Auxiliary module **41.72106.01**



Connectors
To order separately

62.SAC12008B.00
(Picomax 2 and 6 pts)
or
62.SAC12008C.00
(PicoMax 2 pts)



SFSP range

Auxiliary module

- 3 Functions in 1 :
 - Remote controlled switch
 - Variator of intensity of lighting
 - Protection
- Works in an autonomous way



Solutions connectées intelligentes.



SCHEIBER

www.scheiber.com

Description

This module allows to manage the set of the lightings of an installation with variation of the intensity !

Compatible model with the Multibloc Scheiber network

Characteristics

Reference :	41.72107.01 001001
Protected and adjustable output current :	From 0.5 to 5A
Power tension :	10 to 34VDC
Maximum current per module :	20A
Protection against inversion:	Of polarity on its power supply
Protection on the outputs:	Against overvoltage and short circuits
6 protected lighting outputs :	4 ordered ones with lighting variation included and 2 permanent ones
Divers :	Included fixations, compatible model with several types of lightings (strip led, halogen, spots led in tension or current)
Dimensions l x l x h (mm) :	110 x 77
Weight (kg) :	0.190

Accessories :

Pave lighting :

PAVE LED 600x600 34W 3400lm : **OT.ECL113**

4000K with prism and power supplies

Mounting accessories to be ordered with the PAVE LEDS :

OT.ECL118 (suspended assembly).

OT.ECL120 (assembly in projection).

(consult us before ordering)

SLIDE LED 570mm 12VDC : **OT.ECL119**



Power supplies :

Power supply HLG-320H-30 : **OT.ALMHLG320H30**

AC/DC **320W** IP67 VE:90-305VAC

Power supply HLG-600H-30 : **OT.ALMHLG600H30**

AC/DC **600W** VE:90-305VAC VS:30V/20A



Beams of coding

CODING BEAM from N°1 to N°11 :

50.FIL12008.00-01 001001 to 50.FIL12008.00-11 001001

These models exist in version with PicoMax connectors
(example 50.FIL12008.10-01 001001)



CAN beams

6 points connectors from 0.2m up to 15 meters :

0D.CRD450 to 0D.CRD466

Micro-Fit endings

MICROFIT ENDINGS 120 Ohms : **0D.CRD399**

Both extremities of the CAN bus must be completed
with 120 Ω resistances



Bag of accessories

BAG FOR SFSP PicoMax 2PTS - 6PTS :



Accessories :

1 button white wall PLANA complete switch 868Mhz - **OF.INT221**

This model includes frame, support, motor and button.

Also exists in version 315Mhz ref. **OF.INT221-315**

2 button white wall PLANA complete Switch 868Mhz - **OF.INT222**

This model includes frame, support, motor and buttons.

Also exists in version 315Mhz ref. **OF.INT222-315**

2 button grey wall EIKON switch 868Mhz - **OF.INT225**

Without frame

This model includes grey support, motor and buttons.

Also exists in version 315Mhz ref. **OF.INT225-315**

Reference of the frame : **OF.INT220.20642.40**

2 button white wall EIKON switch 868Mhz - **OF.INT226**

Without frame

This model includes white support, motor and buttons.

Also exists in version 315Mhz ref. **OF.INT226-315**

Reference of the frame : **OF.INT220.20642.01**

2 button white wall PLANA switch 868Mhz - **OF.INT227**

Without frame (rounded corners)

This model includes white support, motor and buttons.

Also exists in version 315Mhz ref. **OF.INT227-315**

1 button white wall EIKON switch 868Mhz - **OF.INT229**

Without frame

This model includes white support, motor and button.

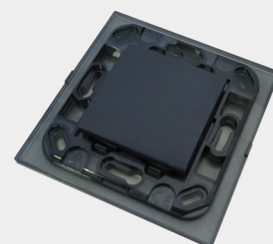
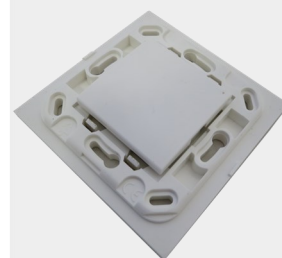
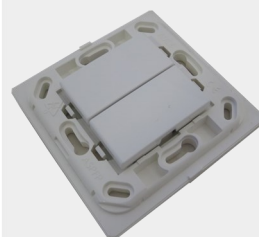
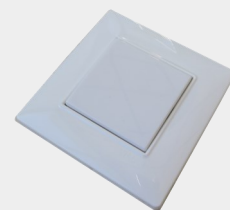
Also exists in version 315Mhz ref. **OF.INT229-315**

1 button grey wall EIKON switch 868 Mhz - **OF.INT230**

Without frame

This model includes grey support, motor and button.

Also exists in version 315Mhz ref. **OF.INT230-315**



SCHEIBER S.A.

Bellevue 85120 Saint-Pierre du Chemin France

Tél. +33 (0)2 51 51 73 21

www.scheiber.com



Solutions connectées intelligentes.



SCHEIBER